



BETHESDA E.C. CHURCH

at Reedsville "A Healing Community"

SERVICE TIMES & INFORMATION

Sunday Morning Services

8:00 am - Traditional Service

9:15 am - Sunday School

10:30 am - Contemporary Service

Nursery & Jr. Church available during the 10:30 service for children ages 2-4th grade.

The 10:30 service is also streamed on YouTube. Find us at:
Bethesda EC Church



Table of Contents

Page 2.....Family Ministries

Page 3.....Pastor's Page

Page 4.....Support Ministries

Page 5.....Local & Global Ministries

Page 6.....Bethesda Leadership

Page 7.....Prayer Requests

Church Picnic

Sunday,

August 21, 2022



Our annual church picnic will soon be here; August 21st and you are invited! The day is always a lot of fun and includes lots of food and fellowship. Of course to put on such a big picnic requires a lot of volunteers to make it all happen. Would you be interested in helping with our picnic?

We need help with:

- serving food and drink
- clean up
- games and activities
- parking and baking cakes



If you have any questions or would like to be involved contact **Steve Svenson at 570-527-8976**.

Thank you for your willingness to serve!

Remember: We will be having Sunday school at 9:15 am and a combined service at 10:30 with the picnic directly following! We look forward to fellowshiping with you!

If you have any outdoor games such as corn hole, bocce ball, etc. please bring it with you to the picnic.

Financial Snapshot June 2022

| | Budgeted | Actual | Difference |
|----------------------|-----------|-----------|-------------|
| Income | \$198,078 | \$154,418 | \$ (43,660) |
| Expenses | \$242,509 | \$214,561 | \$ 27,948 |
| From Reserves | \$ 45,550 | \$ 50,000 | \$ 4,450 |
| NET | | | \$ (11,262) |



Bethesda Children

CHILDREN'S MINISTRIES AGES 4-4TH GRADE

Sunday School Summer Update: There will be no children's Sunday school for the months of July and August.

Please note: there will be childcare during the Sunday School Hour.

Jr. Church - Sunday mornings during the 10:30 service, in Common Ground. Available for ages 2 through 4th grade. This time will build on the activities during Sunday school and provide a lesson and songs during this children's church service!



BYM

BETHESDA YOUTH MINISTRIES GRADES 5-12

Sunday School: There will be no Bethesda Youth Sunday School for the month of August. However, the youth are invited and encouraged to join in the adult class.

Fall Retreat - October 7-9 th at the Tabernacle in Ocean City, NJ. The cost is \$100 per person. Deadline to sign up is Sunday, September 4th. Any questions? Connect with Pastor Stewart or Lily Stoyer.



Young Adult

COLLEGE AGED & TWENTY SOMETHING

Where: Bethesda at the Corner: 1669 Long Run Rd. Sch. Haven

When: Every Thursday from 7-8:30 pm

Discussion: Current hot topics are chosen by the group each week for an open dialogue to occur, bringing a Biblical view point into the reality of the 21st century.

Who: Those that graduated high school/youth group, searching for a place to connect with young adults.

Contact: Lily Stoyer (570-728-0426) or Janie Depp-Hutchinson (814-952-1410)



Women of Bethesda

WOMEN'S MINISTRY

Crochet Circle will be taking a break for the summer. Stay tuned for more information as they pick back up in September!

Ladies Brunch join us on August 20th at 12:30 pm! At the Long Run Diner on the corner of 443 & 183. Any questions connect with Cherie Avezzano at 570-292-6917.



Men of Bethesda

MEN'S MINISTRY

If you are interested in helping to facilitate the Men of Bethesda Facebook, connect with Steve Minnich.



Family Ministries

Ministry Highlights



Join the Bethesda Youth and Children's group on Facebook to stay up to date on all upcoming events.



Thank you to everyone who helped out with VBS in any way, from donations to group guides, snack, craft, rec and lessons! We had an average of 45 kids each day. This event would not be possible without your help!

Bethesda EC Church - 155 Reedsville Road - Schuylkill Haven - 17972 - Phone: 570-739-2241

Mailing Address - 23 Meadowbrook Drive - Schuylkill Haven - 17972

www.bethesdaec.org

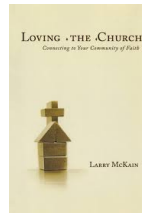


Sunday School

ADULT ELECTIVES

Sunday School through August

Library - *Loving the Church* - taught by Pastor David Root



A Note from Pastor Dave

A Healthy Relationship

While serving as an Army Chaplain, I once covered the Family Life Center in Ansbach, Germany. Most soldiers during this time were deployed to Iraq or Afghanistan while their family remained in Germany. The task was very demanding with hour after hour of counseling. An additional responsibility was to conduct Deployed Spouses Retreats at a resort in Bavaria.

Recently, while rereading Dallas Willard's book, *Renovation of the Heart*, the section on Two Basic Dysfunctional Tendencies in Relationships, I rediscovered a concept. It opened my awareness to a dysfunctional pattern I often observed in even the healthiest relationships. It addresses two basic patterns in relationships: Assault and Withdraw. Willard states, "They are so much a part of ordinary human existence that most people think they are just 'reality,' and never imagine that we could live without them" (pg 181). These two terms also describe military operations in combat—attack or retreat. When a couple's relationship is described in military terms, the couple is in a combative mode.

Assault can be both verbal and physical. Physical assault includes, but is not limited to, murder, adultery, or harm. It also takes the form of gossip, name calling, humiliation, or threats of social harm. Withdraw comes in response to assault-like bullying, or it may be a matter of indifference. In either case intimacy suffers. What often occurs is that someone is offended or insulted by a remark, indiscretion, or omission.

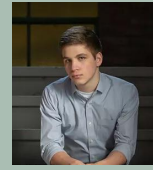
That person reacts with an assault in defiance or in defense. This pattern will continue to escalate until one or both withdraw. Unless the couple seeks an honest assessment of this dysfunctional pattern, they will suffer increasingly grievous emotional wounds.

This unhealthy relationship pattern of assault and withdraw can be mitigated into a healthy interaction through Active Listening and other therapeutic skills. Marriage counseling benefits a couple in self-discovery and assists them in ways to avoid this dysfunctional behavior.

Be intentional by developing a plan to alter the way you relate to one another. Once you discover this unhealthy pattern, brainstorm together on ways you can avoid an emotional battle. Most importantly, seek the Holy Spirit. He can bring divine healing. 1 Peter 4:8, states "for love will cover a multitude of sins" NKJ.

Therefore, go forth and make love, not war.

Thank You



On behalf of the leadership of Bethesda we want to extend a heartfelt thank you to Jason Brauer for his service to the church over the last few years.

His musical ability and his willingness to record, sing, and edit videos for our church during the time of the pandemic and for our traditional service was a much needed help in a very difficult time. His ability to juggle a full time school work load and still perform this for our church speaks greatly to his heart of service and dedication to the giftings that God has provided him. We wish Jason the best as he finishes up his schooling and moves forward into whatever the next step of the journey that God has for him.



At the Ministry Council Meeting on July 6, Steve Babb's official resignation was approved as chair of the Trustees. Steve has served as a trustee since 2000. Steve was a servant leader and became the chair of the Trustees in 2015.

Steve's experience as a maintenance operator and supervisor at Wernersville State Facility helped Bethesda to schedule and act as project manager for various projects needing a bidding process. His fellow trustees appreciated his leadership and acceptance of opinions as they worked to keep our facility in top condition. Steve also has provided many hours of service and organizing a schedule for maintaining lawn care mowing and maintenance of mowing equipment.

We thank Steve for his many years of service. Steve will continue as an at large member of Bethesda Ministry Council and will offer his years of experience as a mentor to Brian Stine who was approved as Trustee at the meeting.

Thank you

Bethesda EC Church - 155 Reedsville Road - Schuylkill Haven - 17972 - Phone: 570-739-2241

Mailing Address - 23 Meadowbrook Drive - Schuylkill Haven - 17972

www.bethesdaec.org



GriefShare

FOR THOSE GRIEVING THE LOSS OF A LOVED ONE

Sunday, August 14th & 28th at 1:30 pm

GriefShare is a support group for those who have lost a spouse, child, family member or friend. Video vignettes, group discussion, personal study, and reflection are part of healing. Call Paul at 570-294-0778 or Maggie at 570-573-0412 for more information.



Celebrate Recovery

FOR THOSE STRUGGLING WITH HURT, PAIN OR ADDICTION OF ANY KIND

Tuesdays at 6:30 pm

Celebrate Recovery is designed to help those struggling with hurts, habits, and hangups by showing them the loving power of Jesus Christ through the recovery process. The program is based on eight principles from the Beatitudes and the Twelve Steps (i.e. AA) and their biblical comparisons. A limitless number of issues can be dealt with through the program such as chemical addictions, overspending, anger, overeating, need to control, fear/anxiety, and more!



Prayer Meetings

MEETING AT THE HOME OF NATE & PEG HEIM

Wednesdays at 6:30 pm

Join us on Wednesdays in person at **Nate & Peg Heim's** residence **starting at 6:30 pm**. Call the church office for more information.



Extended Hands Ministry

HELPING ONE ANOTHER WITH GIFTS IN OUR FELLOWSHIP

Here are some resources if you have a need:

- Meals (ie frozen dinners): Call the church office 570-739-2241
- Interpreting or researching Medical Insurance: Maggie Arbushites 570-573-0412
- Care-giving Issues: Christine Morrison 570-640-1459
- Housing/property project: Jeff Hughes 570-617-4254
- Information & resources about premature babies: Samantha Pfeffer 570-617-5368

Frozen Meals & Food Pantry - Are you or someone you know in need of a warm meal? Did you know that we have meals available in the freezer of the church kitchen? If you know of someone who could benefit from a warm meal, call the church office and we will arrange for pick up or delivery of a meal.

Call the Office at 570-739-2241

Support Ministries

Ministry Highlights



The Church Has Left the Building

Get Ready!!! On **Sunday, October 9, 2022**, Bethesda and Grace EC Churches will again come together to experience The Church Has Left the Building. As the Outreach Commissions from each church continue to meet and plan this opportunity, your help is needed. **We are searching for job site possibilities.** If you know of someone or a family who owns their home (not renting), and needs some landscaping and/or simple renovation or "handyman" work on their property, **please forward their contact information to the church office at 570-739-2241 or email us at**

office@bethesdaec.org.

The preference is for those who cannot afford or are limited by age or physical condition to complete this work on their own. We must have job sites in order to make October 10th a reality.

Thank you for helping us find projects. **Please have your suggestions to the church office ASAP!!!**

Bethesda EC Church - 155 Reedsville Road - Schuylkill Haven - 17972 - Phone: 570-739-2241

Mailing Address - 23 Meadowbrook Drive - Schuylkill Haven - 17972

www.bethesdaec.org



Missionary Corner

Keith & Sarah Evans
Disciplemakers
Lebanon Valley College

- PRAISE for an impactful women's conference this year.
- PRAISE that Zeke is a happy, healthy one year old!
- PRAY for God's guidance as they welcome new and returning students to campus. Ask that they be attentive to the Holy Spirit.



Coffee @ the Corner

Open Every Saturday
8 am till 12 pm

To provide a safe space to have
dialog and be heard.

FREE COFFEE

At the NW corner of 443 & 183

Red Cross Blood Drive

Monday, August 29, 2022
23 Meadowbrook Center
2pm - 7pm

Sign up online now at [Redcross.org](https://www.redcross.org)
or at the welcome counter
starting in August.

Communion

Sunday,
August
21st



Local & Global Ministries

Wayne Township Senior Group

23 Meadowbrook Center
August 2022 Events

Wednesday, August 3rd -

Lunch: Chicken Pot Pie & Tossed Salad
Activity: BINGO! (bring \$2 item for prize table)

Wednesday, August 10th -

Lunch: Turkey & Cheese Sandwich & Soup
Activity: Movin & Groovin with Barb

Wednesday, August 17th -

Lunch: Barbeque & Salad
Activity: BINGO! (bring \$2 for prize table)

Wednesday, August 24th -

Lunch: Chicken Salad Sandwich & Soup
Program: Watercolor Painting (suggested donation \$5)

Wednesday, August 31st -

Lunch: Hess' Choice
Activity: Scrabble Tournament

*Please note the suggested donation
for lunch is now \$7 due to increased costs.*

If you have any questions, please
call the office at **570-739-2241** or
visit **www.23meadowbrook.org**.

Diakon's Programs:

Zumba Gold takes place every
Thursday at 6 pm.

Soft Yoga takes place every
Tuesday at 6 pm.

For more information call Diakon
directly at **570-624-3018**

Bethesda EC Church - 155 Reedsville Road - Schuylkill Haven - 17972 - Phone: 570-739-2241

Mailing Address - 23 Meadowbrook Drive - Schuylkill Haven - 17972

www.bethesdaec.org

The Leaders of the Ministry Council

Our Ministry Council consists of the following officers, commission leaders, and members-at-large:

Officers:

President: Steve Minnich
Vice-President: Curt Behler
Secretary: Tim DeLay
Lay Delegate: Connie Wright
Alternate Lay Delegate: Marty Stoyer
Financial Secretary: Cheryl Bender

Commission Chairs:

Outreach: Janet Stoyer & Lily Stoyer
Integration: Rae Huneke
Discipleship: Steve Minnich
Missions Assistant: Bill Mills
Church Life: Steve Svenson
Operations: Brian Stine
Member at Large: Tasha Humphrey



Ministry Point People Quick Reference Guide

Benevolence: Pastors
Celebrate Recovery: Norma Minnich
Childcare Coordinator:
Children's Ministries:
Coffee at the Corner: Janet Stoyer
Learning Opportunities: Steve Svenson
Counseling Reference: Pastors
Custodial Issues: Roxanne Seltzer
Decorating: Cara Stine
Denominational Relations: Connie Wright
Financial Giving Statements: Cheryl Bender
Food Pantry: DeLay Family
GriefShare: Paul Moyer
Hospitality/Welcome Counter: Rae Huneke
Information/Communications: Church Office
Memorial Gifts: Cheryl Bender
Men of Bethesda: Jeff Hughes
Missionary Support: Connie Wright/Bill Mills
Official Church Matters: Steve Minnich
Outreach Opportunities: Janet & Lily Stoyer
Pastoral Relations: Ed Redding
Prayer: Connie Wright
Prison Ministry: Steve Minnich
Property/Vehicles/Insurance: Brian Avezzano
Life Groups/Triads/Connections: Norma Minnich
Sunday School: Pastor Stewart
Treasurer: Lisa Minnich
Twin Pines: Bette Jo Long
Use of Facility/Pavilion/Fields: Lisa Minnich
Vacation Bible School: Tasha Humphrey
Website: Lisa Minnich
What's for Dinner Wednesday: Linda Bollinger
Women's Ministry: Church Office
Worship Related: Church Office
Young Adult Ministries: Lily Stoyer
Youth Ministry: Lily Stoyer

Who's Who at



Pastoral Relations Committee:

Bethesda EC Church maintains a Pastoral Relations Committee (PRC). The PRC helps to fulfill our commitment to the best interests of the pastors, as well as the health of our congregation. More information about the PRC can be found at

bethesdaec.org/prc

If you have a question or comment you believe would help the PRC in attaining these goals, please contact one of the following PRC members:

Ed Redding

570-915-6367

Connie Wright

570-573-1450

Steve Minnich

570-527-0298

Amanda Gossard

570-527-0651

Chris Morrison

570-640-1459

Bethesda EC Church - 155 Reedsville Road - Schuylkill Haven - 17972 - Phone: 570-739-2241

Mailing Address - 23 Meadowbrook Drive - Schuylkill Haven - 17972

www.bethesdaec.org

Prayer Concerns

August 2022

Personal

Frank Bergen (recovery)
Jim Berger (cancer)
Eileen Blew (knees)
Gary Bruen (kidneys)
Marie Canfield (cancer)
Linda Christman (recovery)
Candee Dysinger (heart)
Carol Endres (treatment)
Mary Jo Faust (pain)
Allison Greene (auto-immune)
Peg Heim (recovery)
Edith Houtz (pneumonia)
Kevin Huneke (recovery)
Rae Huneke (recovery)
Eleanor Jamison (recovery)
Jacob Jamison (cellulitis)
Kay Keefer (cancer)
Thomas Keefer (recovery)
Theresa Kaylor (heart)
Jim Martin (dialysis)
Jen Matz (testing)
Cindy McDonald (surgery)
Jeff McNeil (pain management)
Anna Meade (recovery)
Sheree Minnich (treatment)

Jenna Ogden (transition)
Brian Reading (cancer)
Clyde Rhen (transition)
Katie Sabol (recovery)
Emma Sabol (recovery)
Brittney Seigel (rehab)
Sam Slaseman (treatment)
Stella Soule (recovery)
Peggy Strouse (breathing)
Maria Szumlanski (recovery)

Family

C. Emily Babb Family (stability)
Phillip Christman Family (transition)
Graham Patrick Giammaresi (birth)
Everleigh Grace Hancock (birth)
Joe Krasinsky Family (loss)
Claire Miller Family (trauma)
Brian Mullens Family (incarceration)
Charlotte Petlansky Family (loss)
Carol(schauers)Pliler Family (discernment)

Local, National & Global

EC Officers:

- Bishop Randy Sizemore
- Exec Director: K Henry
- Associates: L. Cool, G. Kuehner, & T. Rathman
- President Joe Biden
- Vice President Kamala Harris
- US Military Forces
- Coronavirus

Congregational

- 23 Meadowbrook Center
- 23 Meadowbrook Rec Center Project
- Celebrate Recovery
- Coffee @ the Corner
- GriefShare ministry
- L.I.F.E. & TUMI Prison Ministries
- Pastoral Transition

All articles for events held from **September 1st** through **October 15th** should be submitted by the **10th of August** to be included in our **September issue**. A copy of this newsletter can also be found on-line at **www.bethesdaec.org**

Local Missions

Jewel Women's Center
Servants to All
Jubilee Ministries
Child Evangelism Fellowship
LIFE Prison Ministry
Bethesda Training Institute

National Missions

Keith & Sarah Evans
Bob & Bettina Schaeffer
Joe & Wendy Toy
Dan & Mary Lynne Wills

Global Missions

Dave & Conce Roof (Brazil)
Lamar & Janice Stoltzfus (Africa)
EC Churches in Nepal
EC Churches in India
EC Churches in Liberia

Shut-ins

Eileen Blew
Mary Ellen Hering
Edith Houtz
Sharon Kissinger
Eleanor & Jacob Jamison
Sheree Minnich
Clyde Rhen

Mary Rhen
Karen Rountree
Maria Szumlanski

Military

Alex Amaya (Navy)
Josh Behler (Air Force)
Jessica Kelley (Air Force)
Ben Kilmer (National Guard)

Jeff McNeil (Army)
Zhen & Sharon Schropp (Air Force)
Nate Stine (Air Force)
Joe Sweigart (Army)
Thomas Walser (Air National Guard)